

## Appendix 1.

### Fairfields Intensive Neighbourhood Management Area (INM)

(Information compiled as part of the INM Review 2007)

#### Worklessness and Low Income

- The number of Working Age Client Group (WACG) claimants in the area increased from 615 in 2005 to 630 in 2006, but has now fallen again to 610 in 2007.
- The following table compares the figures for the Fairfields INM area with those for the combined INM areas and the city as a whole.

	2005	2006	2007
Fairfields	22.8%	23.4%	21.9%
Combined INM areas	32.0%	32.7%	28.3%
Leeds Metropolitan District	14.2%	14.4%	13.0%

- Almost 22% of the working age population in the area are WACG claimants – well above the city average of 13%.
- The number of Job Seekers Allowance (JSA) claimants in the area rose by 16% from 95 in 2005 to 110 in 2006, but has fallen again to 90 in 2007.
- The number of Incapacity Benefit claimants also increased slightly from 320 in 2005 to 335 in 2007, while the number of Lone Parents in receipt of Income Support fell slightly from 100 in 2005 to 95 in 2007.
- The number of households in receipt of Local Authority administered benefits stayed broadly the same over the three year period at around 715.

#### Crime

- The number of reported crimes in the area fell by 38% from 940 in 2005/06 to 581 in 2006/07, compared to a decrease of 10.4% for the city as a whole.

	2005	2006	2007
Fairfields	223.28‰	198.81‰	138.00‰
Combined INM areas	218.3‰	224.6‰	197.07‰
Leeds MD	137.00‰	134.75‰	122.71‰

- At 138 crimes per thousand population the crime rate in the area is still higher than the city average (122.71‰).
- The numbers have fallen across all crime types from the figures recorded in 2005 (with the exception of drugs crime which has increased slightly although the numbers of crimes in this category are relatively small).
- Rates for domestic burglary, criminal damage, drugs crime and violent crime all remain above the averages for the city.

#### Educational Attainment

- The number of pupils living in the area achieving 5 or more GCSEs has risen slightly over the three years from 2005 – 2007, but as a proportion of all children entered the area is still significantly behind the city average (39.3% compared to 56%).
- At Key Stage 2 the numbers of children in the area achieving level 4 in Maths and Science has increased from the 2005 levels, but the number achieving this level in

English has fallen slightly, when expressed as a rate of all entrants in the area the figures are still below the city averages.

## Liveability

- In 2005 the District Local Environmental Quality Survey (DLEQS) showed that 39% of streets in the SOA that covers the Fairfields estate itself had unacceptable levels of litter and detritus compared to a city figure of 20%, by 2006 the figure in this SOA had dropped dramatically to just 9% and this level has been maintained in 2007, and remains below the city average of 13% for the same year.

## Housing

- The following table compares the figures for the Fairfields INM area with those for the combined INM areas and the city as a whole.

	2005	2006	2007	%age inc / dec
Fairfields	£97,167	£106,600	£115,400	+18.8
Combined INM areas	£91,615	£97,144	£106,384	+16.7
Leeds MD	£155,200	£164,700	£177,100	+14.1

- The current housing breakdown of the Fairfields estate is as follows:

Council properties: 390  
 Private/owner: 119  
 Total properties on estate: 509  
 Voids: 2

**Health** (Information received from NHS Leeds ACORN system specifically collated for the Fairfields estate)

- From the Health ACORN data the following have been raised as future problems:

Future Problems	Number of people effected (total 1236)	Percentage of local people (%)
Poor single parent families with lifestyle related illnesses	236	19.1
Multi-ethnic, high smoking, high fast food consumption	728	58.9
Urban estates with sedentary lifestyle and low fruit & veg consumption	272	22.0

- These figures are supported by the 2007 ACORN population data which highlights that 85% of the Fairfields population is classed as 'struggling families' and 12.3 % as 'Burdened singles'.

## Crime data for the Fairfield's Estate

Source: [www.beatcrime.info](http://www.beatcrime.info)

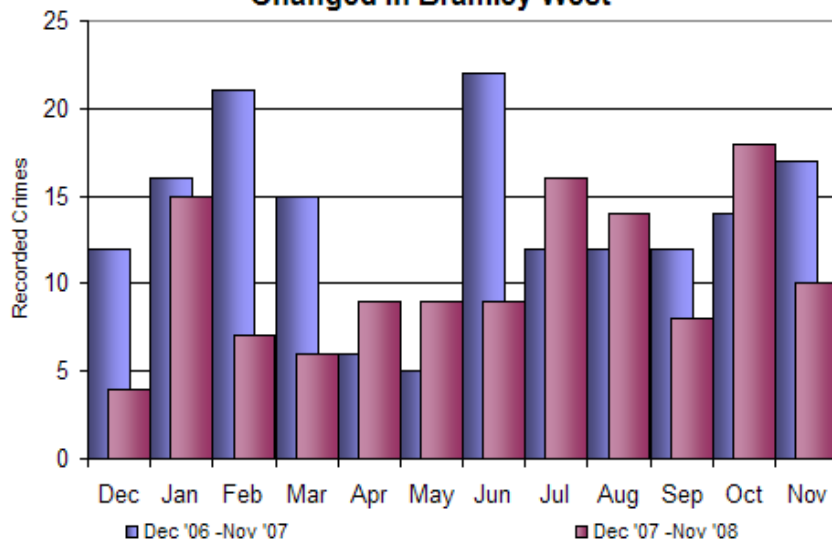
		Over The Last 12 Months				
Bramley West	Nov-08 In This Area	Total For This Area	For Every 1000 Households			
			In The Area	In This Division	In This District	In West Yorkshire
<a href="#">Burglary Dwelling</a>	10	125	23.9	30.2	28.4	23.1

Burglary dwelling for the area is low compared to the district and the division but comparable to the West Yorkshire average.

		Over The Last 12 Months				
Bramley West	Nov-08 In This Area	Total For This Area	For Every 1000 Population			
			In The Area	In This Division	In This District	In West Yorkshire
<a href="#">Vehicle Crime</a>	13	127	10.4	13.1	14.9	13.9

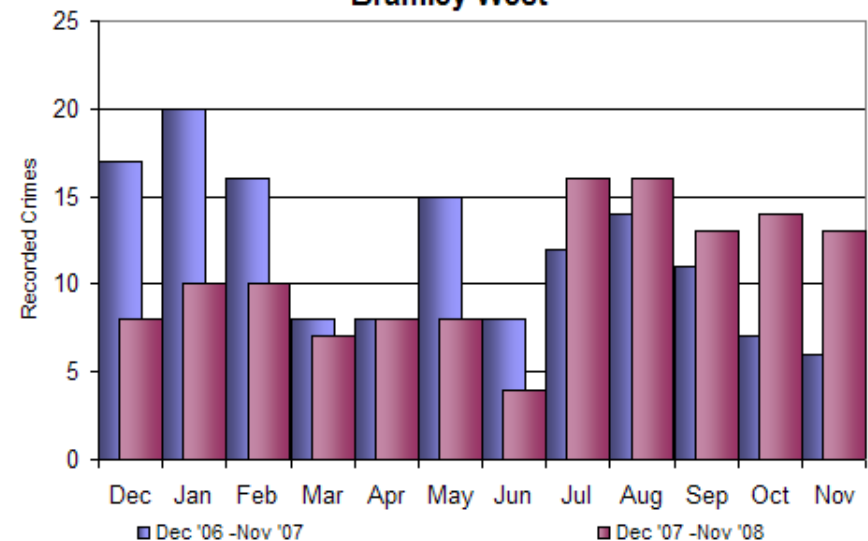
Vehicle crime for the area is low compared to the district, division and the West Yorkshire average.

### How Have Burglary Dwelling Crime Levels Changed In Bramley West



This chart shows the variation in monthly Burglary dwelling figures for the last 24 months

### How Have Vehicle Crime Levels Changed In Bramley West



This chart shows the variation in monthly vehicle crime figures for the last 24 months

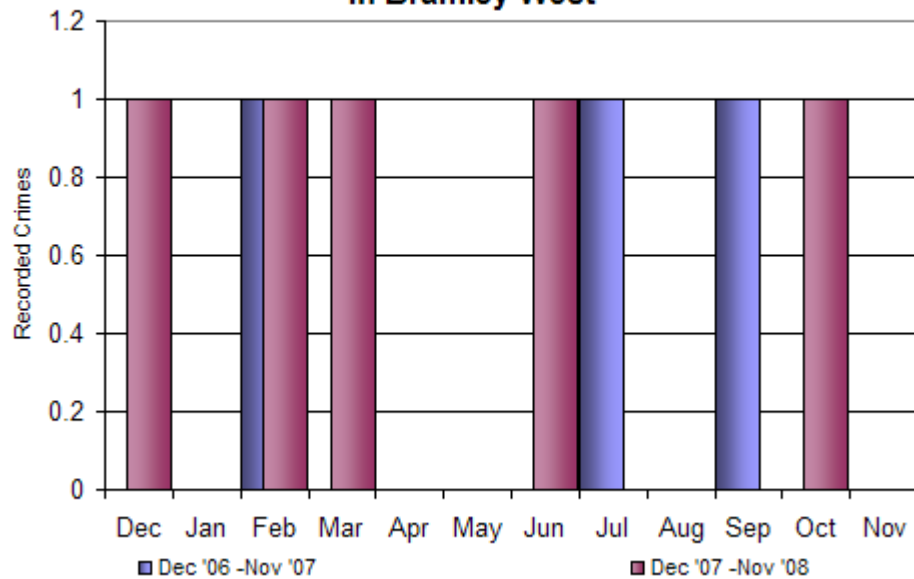
		Over The Last 12 Months				
Bramley West	Nov-08 In This Area	Total For This Area	For Every 1000 Population			
			In The Area	In This Division	In This District	In West Yorkshire
<a href="#">Serious Violent Crime</a>	0	5	0.4	0.2	0.3	0.2

Serious violent crime for the area is high but due to the low numbers of incidents the averages do not allow for comparison

		Over The Last 12 Months				
Bramley West	Nov-08 In This Area	Total For This Area	For Every 1000 Population			
			In The Area	In This Division	In This District	In West Yorkshire
<a href="#">Violent Crime</a>	9	79	6.5	7.1	9.7	8.8

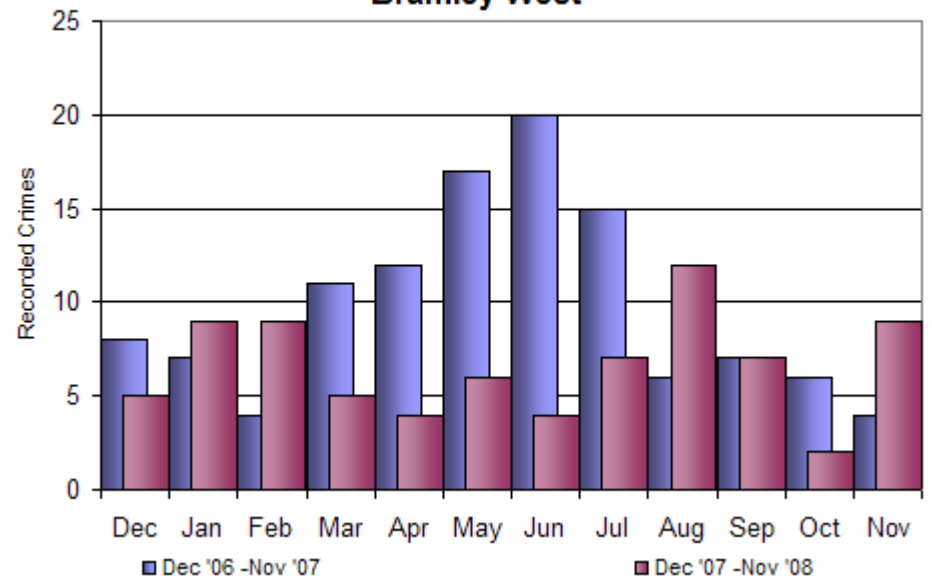
Violent crime in the area is lower than the divisional, district and west Yorkshire averages.

**How Have Serious Violent Crime Levels Changed In Bramley West**



This chart shows the variation in monthly serious violent crime figures for the last 24 months

**How Have Violent Crime Levels Changed In Bramley West**



This chart shows the variation in monthly violent crime figures for the last 24 months

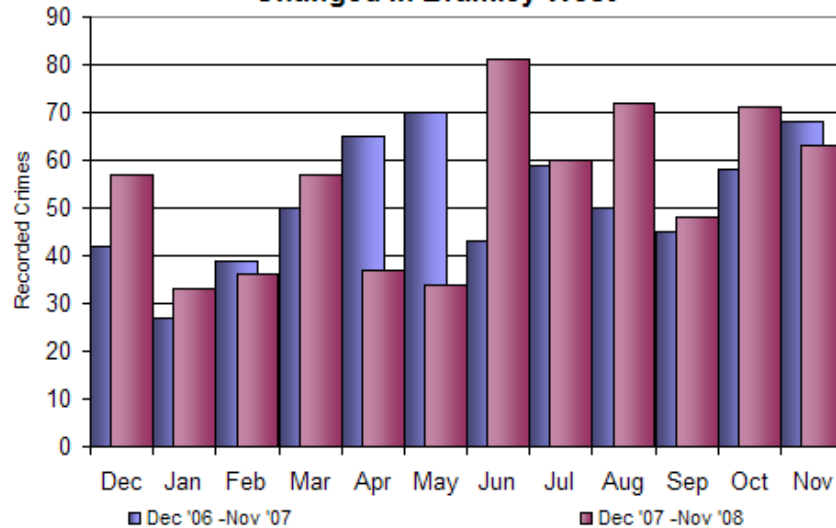
		Over The Last 12 Months				
Bramley West	Nov-08 In This Area	Total For This Area	For Every 1000 Population			
			In The Area	In This Division	In This District	In West Yorkshire
<a href="#">Anti-Social Behaviour</a>	63	642	52.4	46.3	58.2	60.5

Anti-social behaviour in the area is slightly higher compared to the divisional average but lower than the district and west Yorkshire averages.

		Over The Last 12 Months				
Bramley West	Nov-08 In This Area	Total For This Area	For Every 1000 Population			
			In The Area	In This Division	In This District	In West Yorkshire
<a href="#">Criminal Damage</a>	29	285	23.3	21.3	24.2	23.2

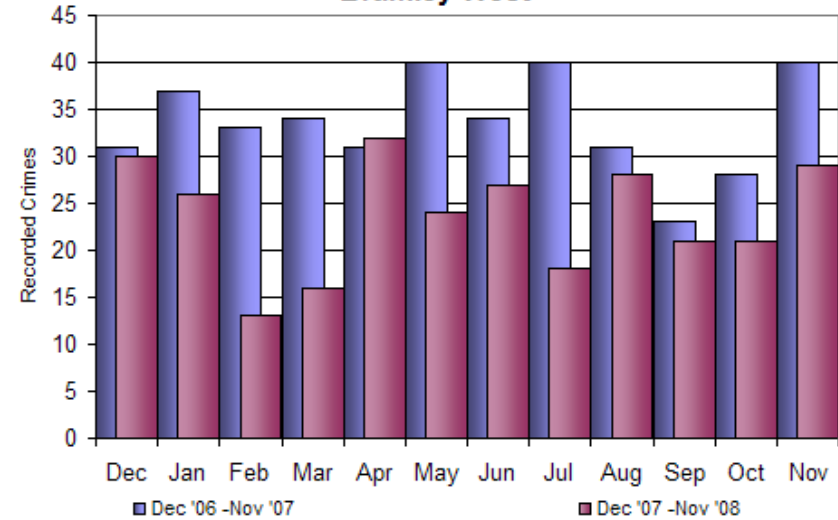
Criminal damage in the area is comparable to the divisional, district and west Yorkshire averages.

**How Have Anti-Social Behaviour Incidents Changed In Bramley West**



This chart shows the variation in monthly anti-social behaviour figures for the last 24 months

**How Have Criminal Damage Levels Changed In Bramley West**



This chart shows the variation in monthly criminal damage figures for the last 24 months